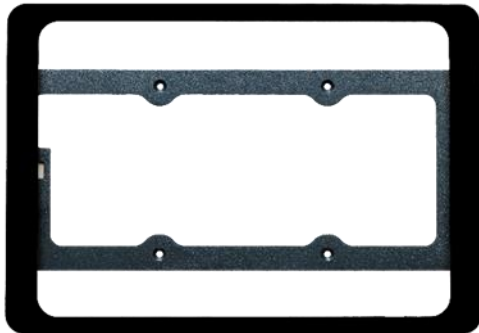


# Ipad frame 10.9 (QFRAME109)



1 QFRAME

## 1. Product description

The QFRAME109 (white or black) is a tablet holder that consists of an aluminium finish frame and an iron bracket in which an Ipad can be mounted.

Ipads of different generations are compatible with this tablet holder:

- Ipad 10th generation (2022)
- Ipad Air 4<sup>th</sup>, 5<sup>th</sup> and 6<sup>th</sup> generation
- Ipad Pro 1<sup>st</sup>, 2<sup>nd</sup>, 3<sup>rd</sup>, and 4<sup>th</sup> generation

The frame is attached by hooking it over the bracket on one side. Due to the built-in magnets in the frame, it then pulls itself flat against the bracket. As a final step, it can be fixed on the other side by means of an adjusting screw.

Power for the Ipad can be provided by means of a USB adapter (QFRAME/USB), which can be ordered separately and built into the wall.

## 2. Safety rules



Please read the entire manual before installing and activating the module.

### ATTENTION

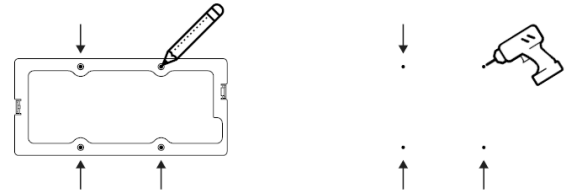
- Choose carefully where to place the tablet holder. Do not place it in direct sunlight to prevent overheating of the tablet.
- Follow tablet manufacturer's recommendations.
- The QFRAME and QFRAME/USB should be installed and maintained by a licensed electrical installer in accordance with the applicable legal regulations of the country.
- Before working on the QFRAME and QFRAME/USB, the power must be switched off.

## 3. Installation and wiring

**CAUTION : DISCONNECT THE POWER SUPPLY TO THE UNIT BEFORE WORKING ON THE FRAME.**

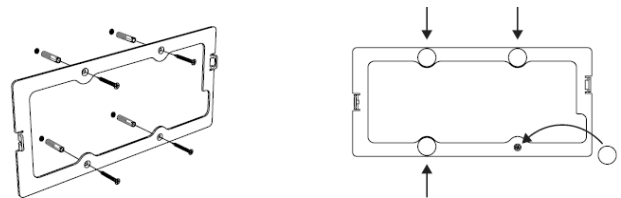
### Preparation:

The frame can be mounted horizontally or vertically. Mark out the holes to be drilled, drill the holes and install the plugs.



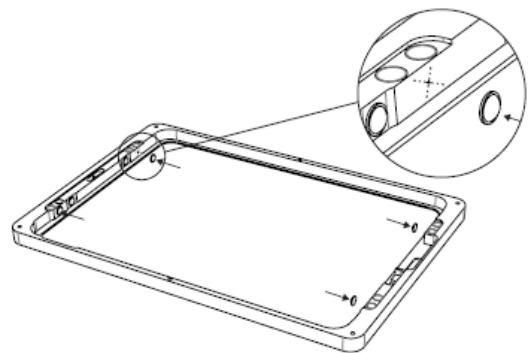
### Installation bracket:

Fit the wall bracket with the screws provided and, after screwing, glue the black self-adhesive round bumper pads over the screws.



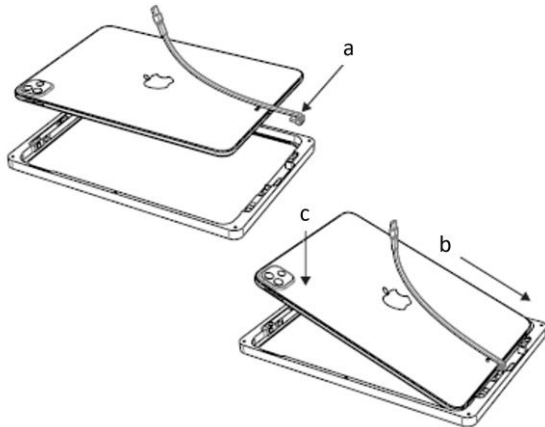
### Ipad placement:

If the Ipad, is an Ipad Pro or an Ipad Air, mount the supplied self-adhesive transparent buffers in the indicated location.

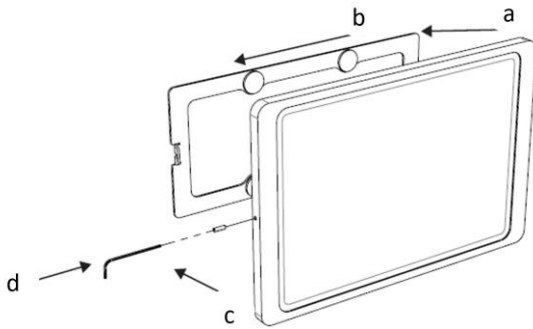


Then connect the supplied USB cable to the Ipad and place the Ipad with the screen facing down in the finishing frame.

# Ipad frame 10.9 (QFRAME109)



Now hook one side of the frame with Ipad over the bracket's hook and turn the holder towards the wall. The magnets will attract the frame flat. Fix the frame using the adjusting screw provided.



## 4. Technical data

### General specifications:

- Finishing frame made of aluminium, finished with powder paint RAL9003 (white) or RAL 9011 (black)
- Mounting bracket made of iron, powder-coated to RAL7021

### Fysical specifications:

- Aluminium finishing frame
- Protection rating: IP20, EN 60529
- Installation: screws and dowels
- Dimensions (h x w x l): 280mm x 195mm x 11mm
- Weight: approximately 100g.

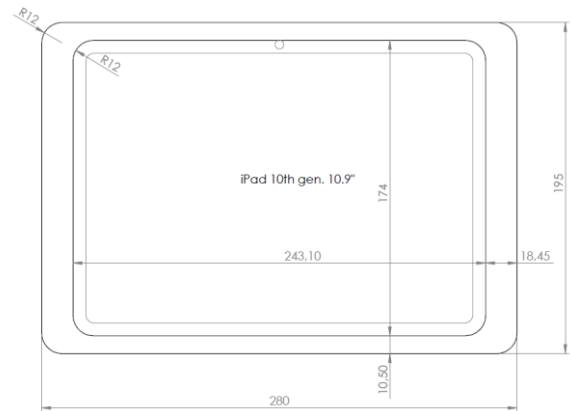


Figure 2 Measurements QFRAME

## 5. Explanation of symbols



Equipment which protection against the risk of electrical contact is based not only on basic insulation but also on additional protection such as double insulation or reinforced insulation. There is no option to earth the equipment.



The operating instructions of the product in question must be read before the device is connected. ISO7000-0434



Mains connection (230V) to the power connector. IEC 60417-5036



CE conformity. All declarations of conformity are available upon request.

## 6. Warranty provisions

Warranty period: 2 years from the date of delivery. The warranty will no longer be valid if the module has been opened! The warranty period will be extended by 2 years if the module has been installed by an authorised Qbus installer.

Qbus support must be contacted first in case of shortcomings, after which defect modules can be sent to our service department at no cost:

Qbus NV  
Joseph Cardijnstraat 19  
B-9420 Erpe-Mere  
Tel: +32 (0)53 60 72 10  
Fax: +32 (0)53 60 72 19  
Email: [support@qbus.be](mailto:support@qbus.be)